



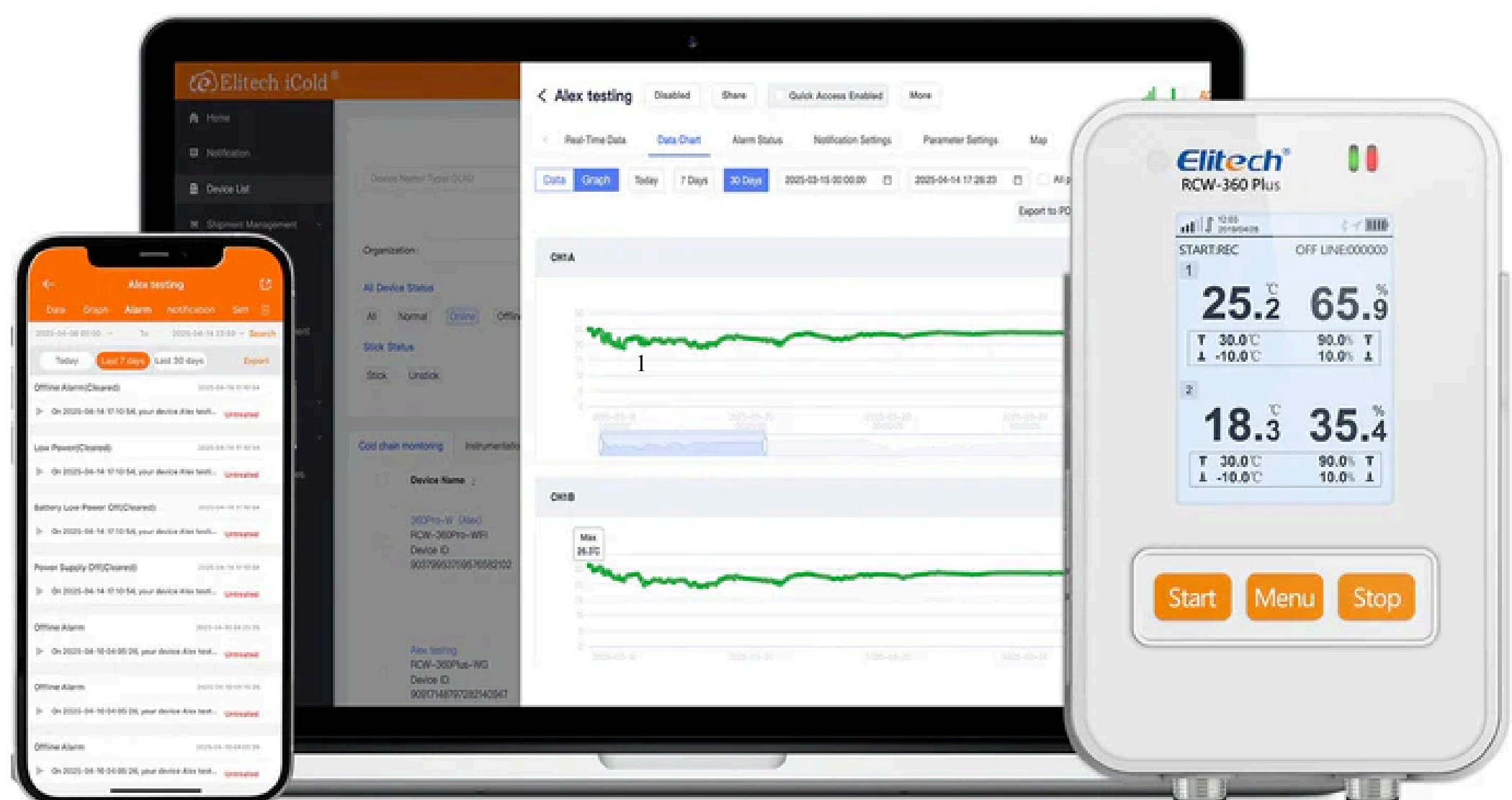
LNV CORPORATION

(A Complete Solution for Industrial & Health Care Products and Services)



Elitech®

WiFi + 4G Cellular Real-Time Digital Temperature Humidity Light Data Logger with Diverse Replaceable Probes(Sold Separately), 100,000 Points, Cloud Data Storage, SMS/Email/APP/Web Alarm, TFT Color Screen, RCW-360Plus-WG-DC



- WiFi + 4G Cellular Real-Time
- Digital Temperature Humidity Light Data Logger
- Diverse Replaceable Probes(Sold Separately)
- 100,000 Points
- Cloud Data Storage
- SMS/Email/APP/Web Alarm
- TFT Color Screen
- RCW-360Plus-WG-DC

CONTACT US:

☎ 7806070680

✉ lnvcorpbbhopal@gmail.com

🌐 www.lnvcorporation.in

www.lnvcorporation.com





LNV CORPORATION

(A Complete Solution for Industrial & Health Care Products and Services)



Elitech



Probe type	Model	Cable	Point	Range	Accuracy
Gel bottle temperature	TD3X-TE(GLE)-H	2 Meters	One temperature probe	-40°C~85°C	±0.5°C

Probe type	Model	Cable	Point	Range	Accuracy
Ultra low temperature	PT100IIC-TLE-H	3 Meters	One temperature probe	-200°C~150°C	±0.5°C(-40~85°C) +1°C(-100~150°C) ±2°C(others)

Ideal Applications

- Cold-chain, vaccine/biologics storage where remote, real-time monitoring is mandatory
- Warehouses, labs, data centres where temperature & humidity (and optionally light) monitoring is required
- Food & beverage production/ storage – quality & regulatory compliance situations
- Agriculture / greenhouse / environmental monitoring where remote alerting helps
- Multi-site deployments where cloud monitoring + cellular ensures connectivity even when WiFi is unavailable

Elitech RCW-360Plus-WG-DC

WiFi & 4G Real-Time Temperature, Humidity & Light Data Logger

with Cloud, Replaceable Probes (Sold Separately), TFT Colour Screen & Dual-Channel Expansion

CONTACT US:

7806070680

lnvcorpbbhopal@gmail.com

www.lnvcorporation.in

www.lnvcorporation.com





LNv CORPORATION

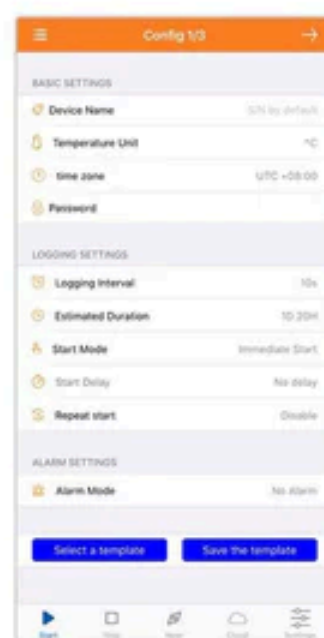
(A Complete Solution for Industrial & Health Care Products and Services)



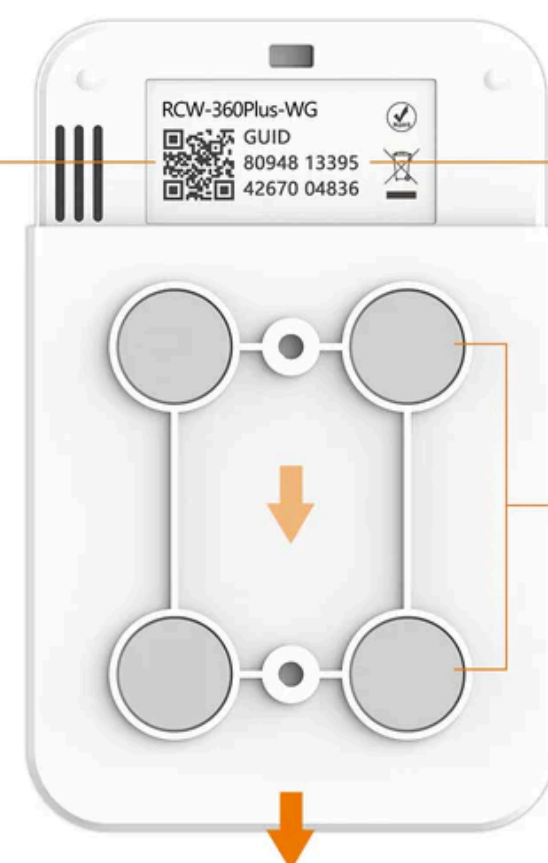
Elitech®

Access Data Anywhere Anytime

with APP/ Web

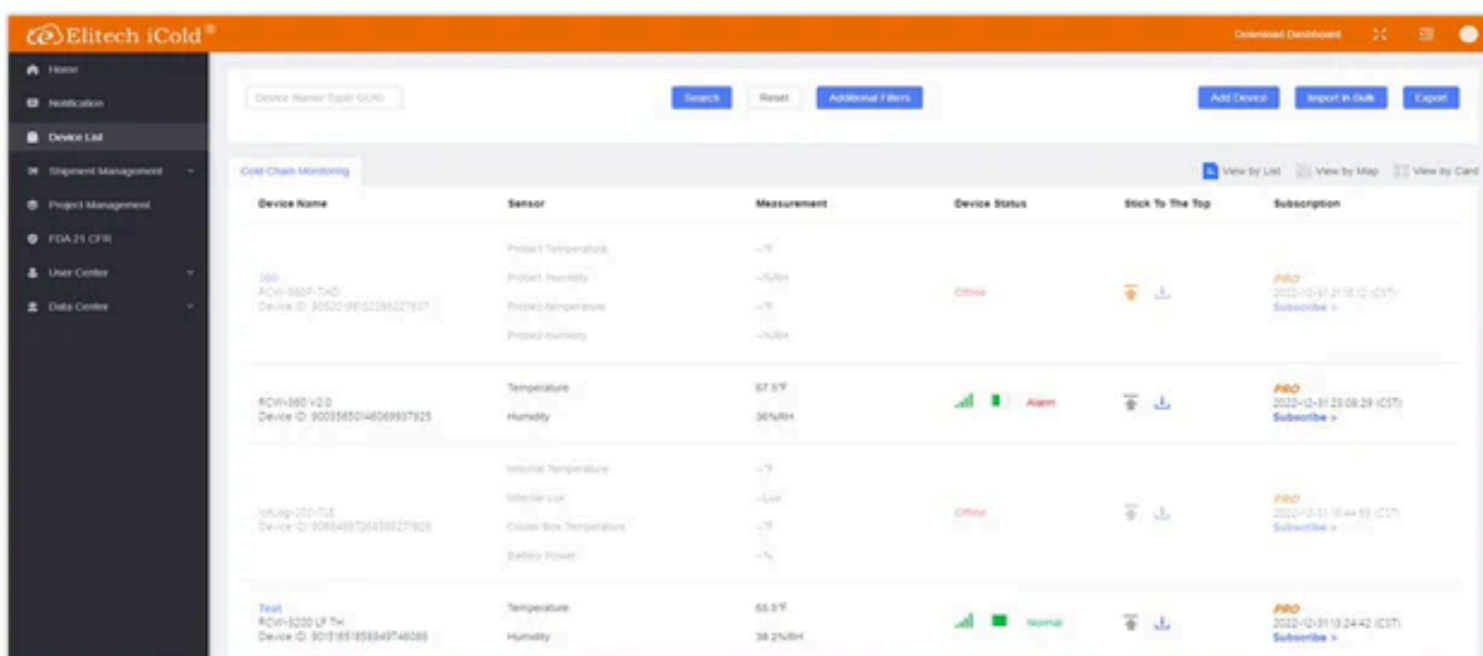


Scan QR Code
and Add it in App



GUID Numbers

4 strong
magnets



BUILT-IN SIM CARD

Just Plug and Play Built-in
SIM Card Already



CONTACT US:

7806070680

lnvcorpbbhopal@gmail.com

www.lnvcorporation.in

www.lnvcorporation.com





LNV CORPORATION

(A Complete Solution for Industrial & Health Care Products and Services)



Elitech®



Probe type	Model	Cable	Point	Range	Accuracy
Single temperature	TD3X-TE-H	5 Meters	One temperature probe	-40°C~85°C	±0.5°C

Probe type	Model	Cable	Point	Range	Accuracy
1 Dual temperature	TD3X-TDE-H	5 Meters	Two temperature probe	-40°C~85°C	±0.5°C



Probe type	Model	Cable	Point	Range	Accuracy
Temperature and humidity	HTD3X-THE-H	5 Meters	1 temperature probe and 1 humidity probe	T:-40°C~85°C H:0~100%RH	T:±0.5°C H:±5%RH

CONTACT US:

7806070680

lnvcorpbbhopal@gmail.com

www.lnvcorporation.in

www.lnvcorporation.com





LVN CORPORATION

(A Complete Solution for Industrial & Health Care Products and Services)



Elitech[®]

• Key Features

- Dual-network connectivity: supports both WiFi and 4G cellular for real-time remote monitoring and data upload. Elitech Technology, Inc.+1
- On-board large memory: can store up to 100,000 data points offline so data isn't lost even during connectivity disruption. Elitech Technology, Inc.+1
- Replaceable probe system: accepts diverse external probes (temperature, humidity, ultra-low temperature, light, etc) which are sold separately — so you adapt the logger to your application. Elitech Technology, Inc.+1
- Built-in colour TFT display: Quick glance at current readings right on the device screen (useful for on-site checks) — improving usability. Elitech Technology, Inc.
- Cloud data storage and remote monitoring: Works with the Elitech iCold or equivalent cloud platform allowing you to view, manage and analyze from web or mobile. ShockWatch+1
- Alerting system: Supports automatic alarms via SMS, Email, APP push, Web in case parameters drift out of range — enabling instant actions. Elitech Technology, Inc.+1
- Flexible installation and operation: Rechargeable lithium battery backup plus mains/DC input likely, so you get continuous monitoring even during power disruptions. ShockWatch+1
- Rugged design & wide measurement range: Typically covers -40°C to $+80^{\circ}\text{C}$ (external) or -20°C to $+60^{\circ}\text{C}$ (internal) for temperature; 0-100 % RH for humidity.



CONTACT US:

☎ 7806070680

✉ lnvcorpbhopal@gmail.com

🌐 www.lnvcorporation.in

www.lnvcorporation.com



LNV CORPORATION

(A Complete Solution for Industrial & Health Care Products and Services)



Elitech[®]

Technical Specifications

Parameter	Value
Memory capacity	100,000 points
Logging interval	1 min – 24 hrs (configurable)
Temperature measurement range	External probe: -40 °C to +80 °C (typical)
Humidity measurement range	0 % to 100 % RH (for humidity probes)
Display type	Colour TFT screen
Connectivity	WiFi + 4G cellular
Power supply	Rechargeable lithium battery + external DC/USB
Protection rating (external sensor version)	IP64/IP65 (depending on probe configuration)
Size approx.	109 × 69.4 × 22.9 mm (as per spec sheet)



CONTACT US:

 7806070680

 lnvcorpbbhopal@gmail.com

 www.lnvcorporation.in

www.lnvcorporation.com